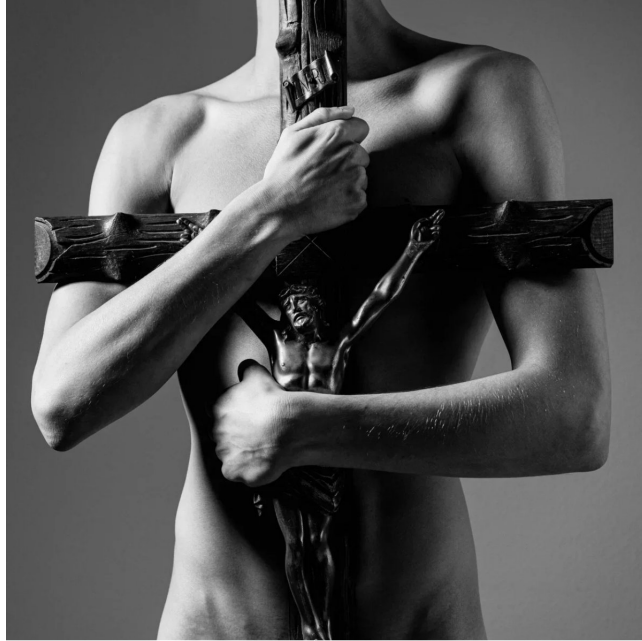


ART THAT MATTERS

by Spannenburg.Art

artthatmatters.gallery | management@spannenburg.art | +31621892151



ARJAN SPANNENBURG

SEGREGATION

2023

Segregation is a social and political process that separates people into different groups based on race, ethnicity, religion, or social class. It is a complex phenomenon that can be both intentional and unintentional, and it has a long history in many societies. The image above illustrates the concept of segregation through the figure of Christ on the cross, which is held by a man whose body is partially obscured by the cross, symbolizing the intersection of the divine and the human, and the separation of the sacred from the secular.

"}

Segregation is a social and political process that separates people into different groups based on race, ethnicity, religion, or social class. It is a complex phenomenon that can be both intentional and unintentional, and it has a long history in many societies. The image above illustrates the concept of segregation through the figure of Christ on the cross, which is held by a man whose body is partially obscured by the cross, symbolizing the intersection of the divine and the human, and the separation of the sacred from the secular.

≠ t

Segregation is a social and political process that separates people into different groups based on race, ethnicity, religion, or social class. It is a complex phenomenon that can be both intentional and unintentional, and it has a long history in many societies. The image above illustrates the concept of segregation through the figure of Christ on the cross, which is held by a man whose body is partially obscured by the cross, symbolizing the intersection of the divine and the human, and the separation of the sacred from the secular.

CE -

ä°

Giclée Ultrachrome, 2023, 100x100cm, Edition 1/10. The artwork is a black and white photograph of a shirtless man holding a crucifix. The crucifix is positioned in front of his chest, and his hands are gripping the arms of the cross. The lighting is dramatic, highlighting the contours of his body and the texture of the wood of the cross.

αΔΔ

Segregation is a social and political process that separates people into different groups based on race, ethnicity, religion, or social class. It is a complex phenomenon that can be both intentional and unintentional, and it has a long history in many societies. The image above illustrates the concept of segregation through the figure of Christ on the cross, which is held by a man whose body is partially obscured by the cross, symbolizing the intersection of the divine and the human, and the separation of the sacred from the secular.

DΔ

Segregation is a social and political process that separates people into different groups based on race, ethnicity, religion, or social class. It is a complex phenomenon that can be both intentional and unintentional, and it has a long history in many societies. The image above illustrates the concept of segregation through the figure of Christ on the cross, which is held by a man whose body is partially obscured by the cross, symbolizing the intersection of the divine and the human, and the separation of the sacred from the secular.

Π0

Giclée Ultrachrome, 2023, 100x100cm, Edition 1/10. The artwork is a black and white photograph of a shirtless man holding a crucifix. The crucifix is positioned in front of his chest, and his hands are gripping the arms of the cross. The lighting is dramatic, highlighting the contours of his body and the texture of the wood of the cross.

© X ©

ART THAT MATTERS

by Spannenburg.Art

artthatmatters.gallery | management@spannenburg.art | +31621892151

(| \$ i -



~~©~~ä

@ J@ ,¼D -t| iÈä

è¹X

Dæjan(Spa(annenburg, 1978D M@ œÝ)X •(x ' @ P t0@ x i 0 "PÐCE m < \ ,¼D -iÈä. øX -Ä 'ÁX uiÐ" '1ü •0 \ Ð \ ÐI •-Xà ^µÈä. ,Xà ü\ Q1<

°-" xÝX |Ü tà ^Uä\ èÄ| äà ~" -CEDäD ©©iÈä. t ,8\ ÁTä@ Ý Ð 4 x<äd i)XÀì, ÜÜÐ x€ 8Ä@X J@ CEµX D"1, ÀÀ, tt, ø-à -'D ¥ ÐI| °iÈä.

\$i-ZERP \$i-(Ltô)X Á\$ CE• '\, ¢(„øX -Ä@ äLü @ CE ~" m «ü %o-Ð ÈµÈä.

- PAN TæLtô
- äæ,-È, LTì
- •èæ < , |°
- |ðÜÈ, tÈ-D
- µÐ|\Ätæ, \<i

øX 'ä@ ä\ x CE¥^Ð CE¥ ^<p, ätø Ü-D Do\ ... \ öø ¥CED Ä •ü ìü ^µÈä.

·xÁ l
D, il
D, läX0
Ü ¥CE
tLä-
¥t
Dóα,
0i ^
t© }
x ó~-)h
' \øx

ART THAT MATTERS



© 2026 Arjan Spanenburg



GoogleD ½ØD ó t ü8"

CECE

ART THAT MATTERS
Sole Proprietorship
Hendrik Werkmanstraat 79
1328DK, Almere
Flevoland
The Netherlands
-Ä·ñ]`8: 520N1001 (
€L:001419428B24